



Option Kit for iPod

Installation and Operation

Note: iPod is a trademark of Apple Inc., registered in the US and other countries.

"Made for iPod" means that an electronic accessory has been designed to connect specifically to iPod and has been certified by the developer to meet Apple performance standards. Apple is not responsible for the operation of this device or its compliance with safety and regulatory standards.

SportsArt Option Kit for iPod

Installation and Operating Instructions

Version 3; Date 2010-12-22; Note: this version replaces all previous versions.

Introduction

SportsArt is pleased to provide the Option Kit for iPod. This kit enables users of SportsArt cardio products to enjoy music and/or videos stored on iPods while exercising.

Audio functions are available on the following products.

Treadmills: T630, T652, T652M, T670E

Bikes: C570R, C570U

Elliptical trainers: E870

Cross trainers: S770

On these products, select songs via the iPod. Press the volume control keys on the cardio product display to adjust volume.

Audio and video functions are available on the following products.

Treadmills: T680E

Bikes: C580R, C580U

Elliptical Trainers: E880

Cross trainers: S780

On these products, select songs or movies and adjust volume via the control keys on the cardio product display.

Please note that the SportsArt Option Kit for iPod is not universal. Option kits correspond to specific SportsArt cardio products as follows:

- Option Kit for iPod - C570 S770 E870
- Option Kit for iPod - C580 E880
- Option Kit for iPod - T630
- Option Kit for iPod - T652 T652M
- Option Kit for iPod - T670E
- Option Kit for iPod - T680E

Installation and operating instructions are also product-specific. In the following, refer to instructions that pertain to your particular cardio product.

Please follow instructions in this manual while installing and operating this device. If you have questions, please call the SportsArt America Service Department at 866-709-1750. For comments about this manual, please contact bob@sportsartamerica.com.

To understand the iPod compatibility of SportsArt products, please refer to the Compatibility Chart at the end of this manual.

Note: iPod is a trademark of Apple Inc., registered in the US and other countries.

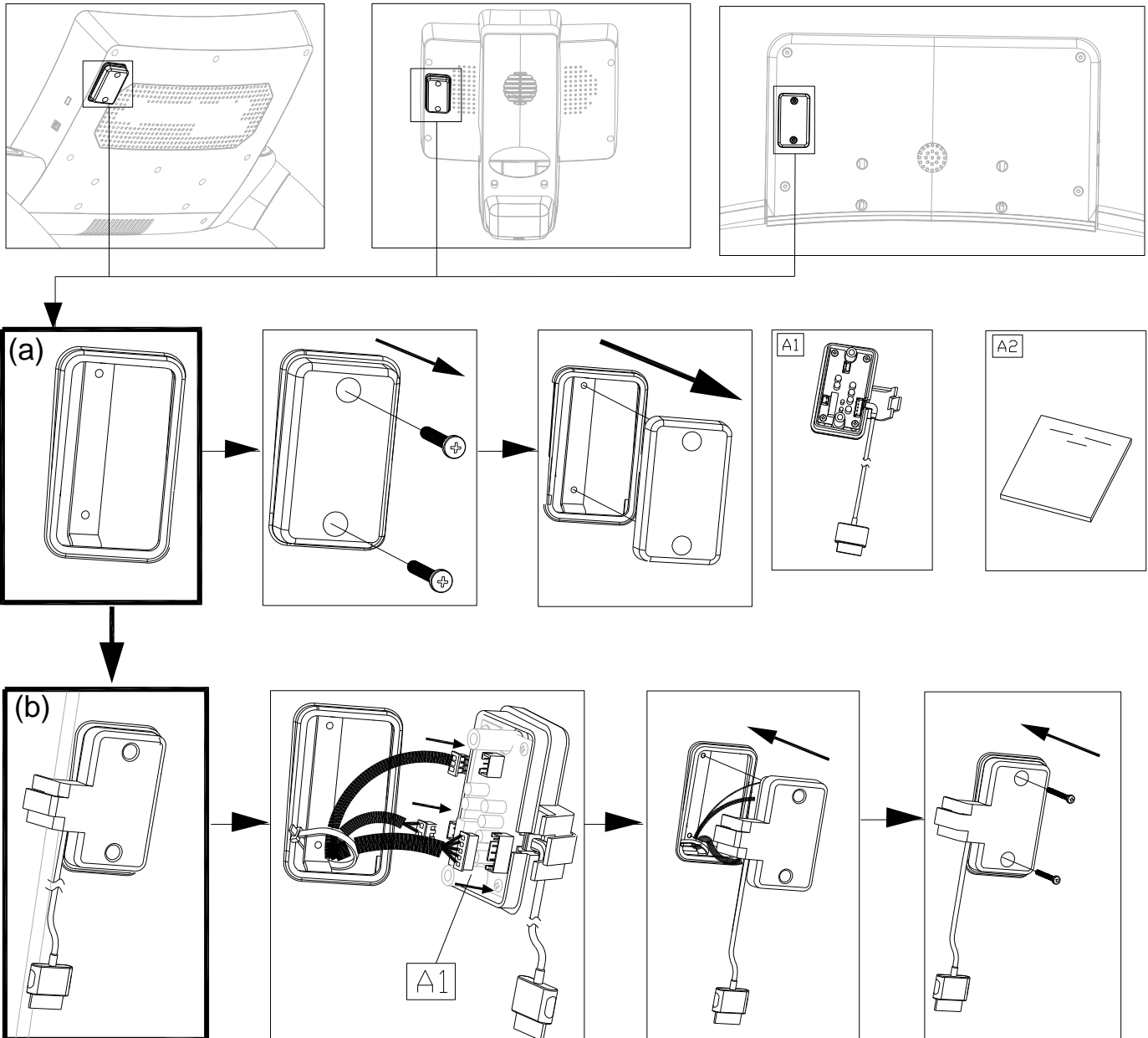
“Made for iPod” means that an electronic accessory has been designed to connect specifically to iPod and has been certified by the developer to meet Apple performance standards. Apple is not responsible for the operation of this device or its compliance with safety and regulatory standards.

Installation Instructions

T670E, C570U, C570R, E870, S770, T630

Please follow instructions below to install the option kit connector cable and cover.

- a. Use a Phillips head screwdriver to remove two screws in the small cover shown below. Then remove the cover.
- b. Insert cables attached to the bracket for iPod into the circuit board in the connector cover for iPod (A1). Then insert the connector cover (A1) into the opening. Secure the cover by securing the two screws.



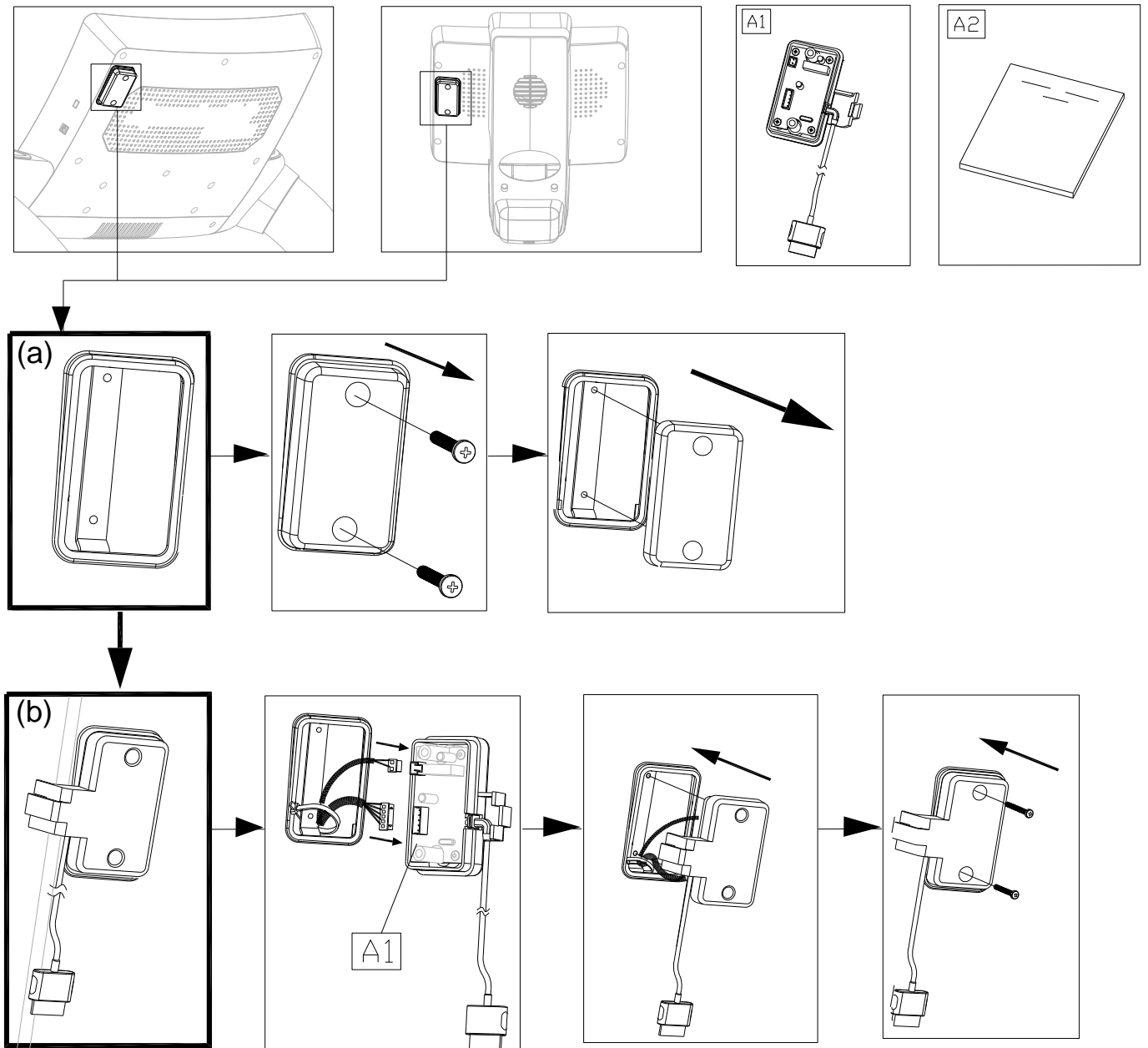
Installation Instructions (Continued)

T680E, C580U, C580R, E880, S780

Please follow instructions below to install the option kit connector cable and cover.

a. Use a Phillips head screwdriver to remove two screws in the small cover shown below. Then remove the cover.

b. Insert cables attached to the bracket for iPod into the circuit board in the connector cover for iPod (A1). Then insert the connector cover (A1) into the opening. Secure the cover by securing the two screws.



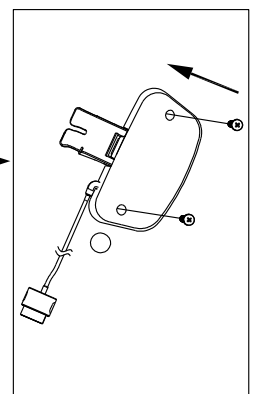
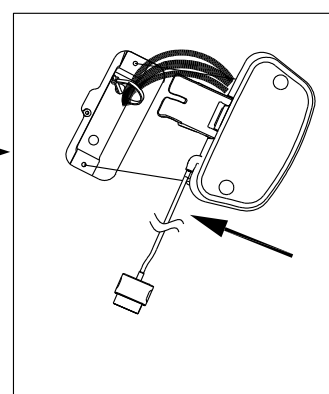
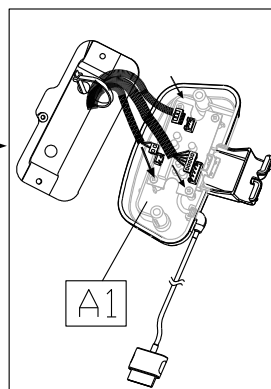
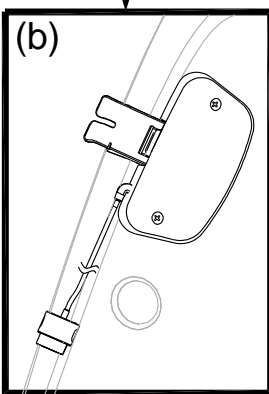
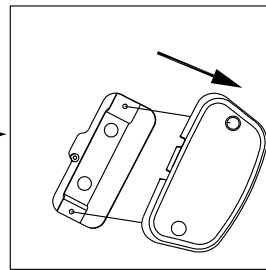
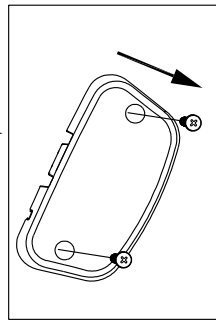
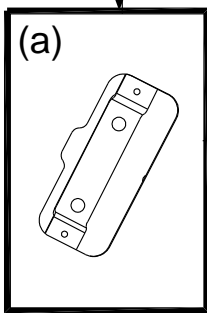
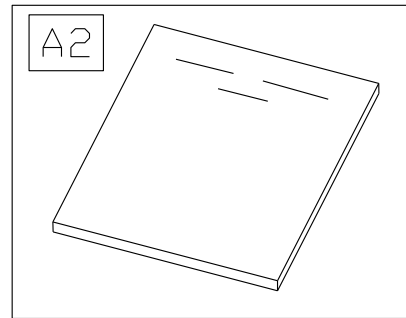
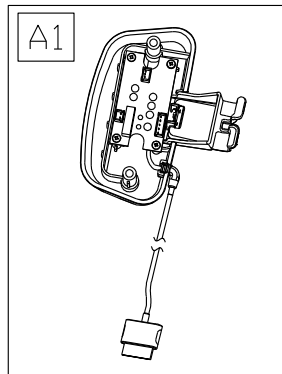
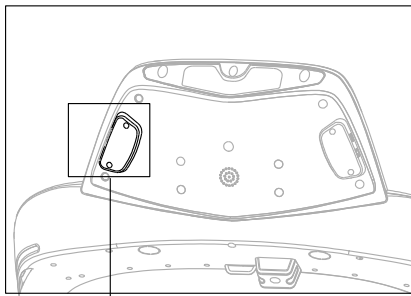
Installation Instructions (Continued)

T652, T652M

Please follow instructions below to install the option kit connector cable and cover.

a. Use a Phillips head screwdriver to remove two screws in the small cover shown below. Then remove the cover.

b. Insert cables attached to the bracket for iPod into the circuit board in the connector cover for iPod (A1). Then insert the connector cover (A1) into the opening. Secure the cover by securing the two screws.

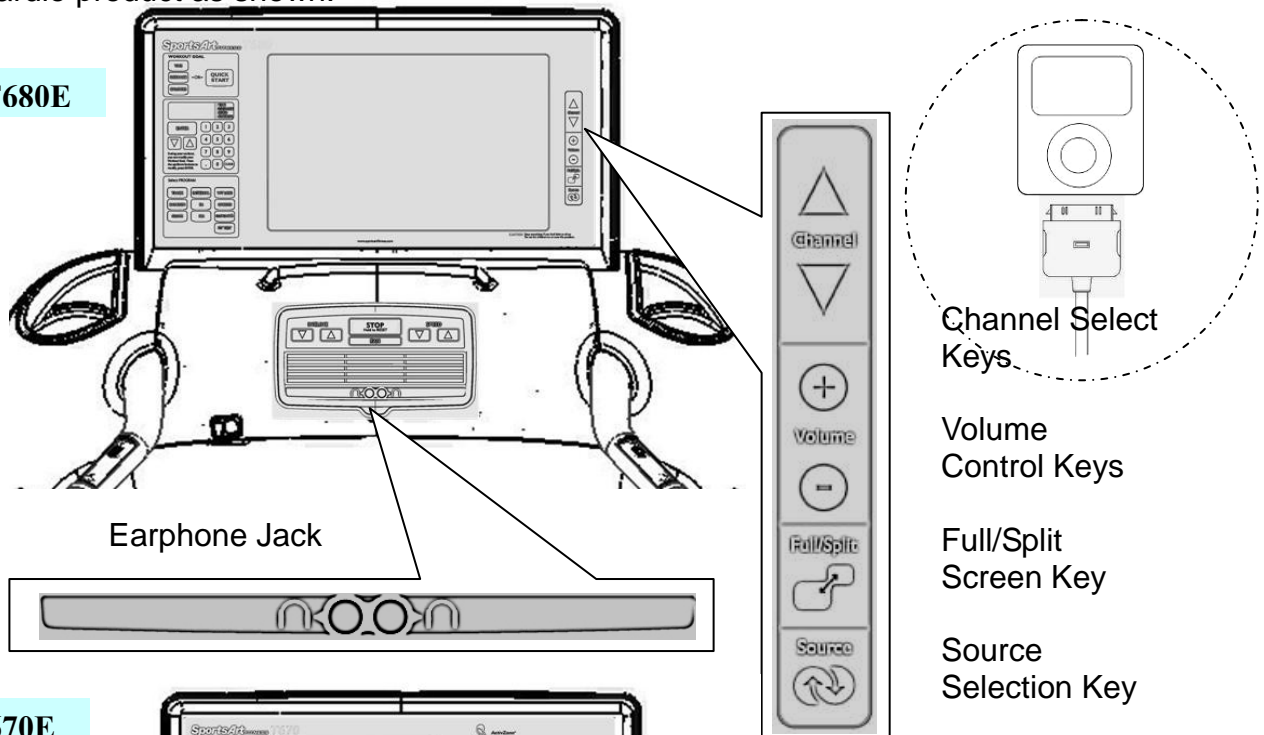


Operating Instructions

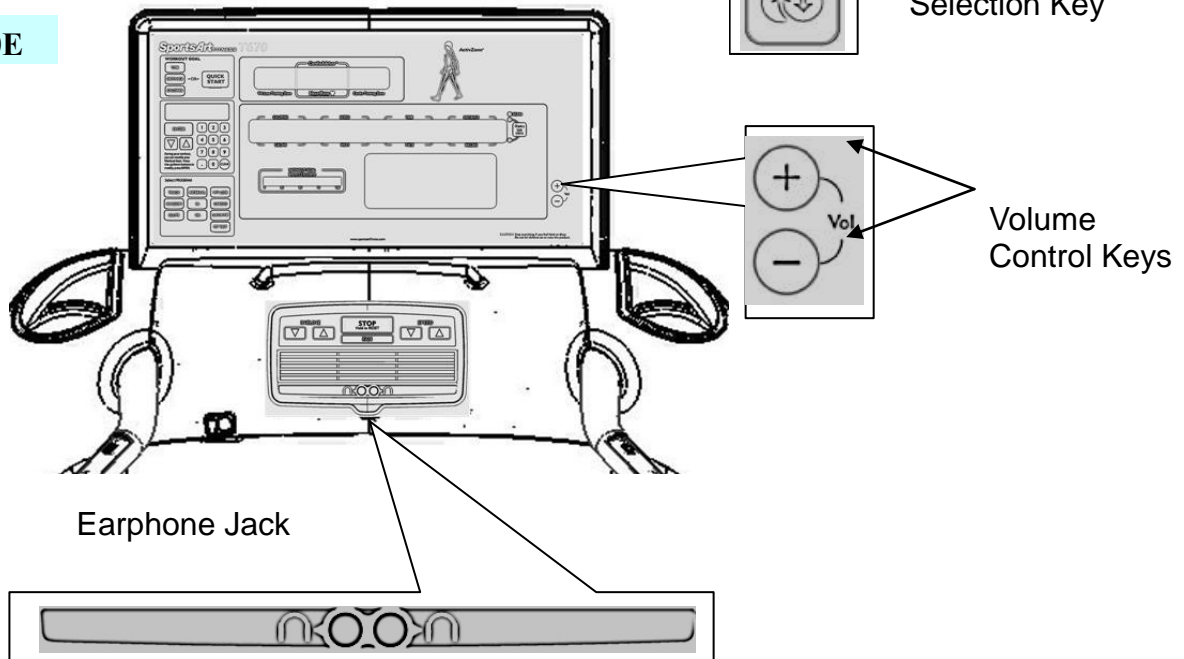
T680E, T670E

Please connect the iPod to the connector cable for iPod. Insert earphones into the earphone jack on the cardio product as shown.

T680E



T670E



T680E: Select "AV" mode by pressing the "Source" key on the treadmill until "AV" appears on the treadmill display. Press the play key on the iPod to view music and video titles. Press the "Full/Split" key on the treadmill to choose either full or split screen modes. Press "Volume +/-" keys on the treadmill to select volume.

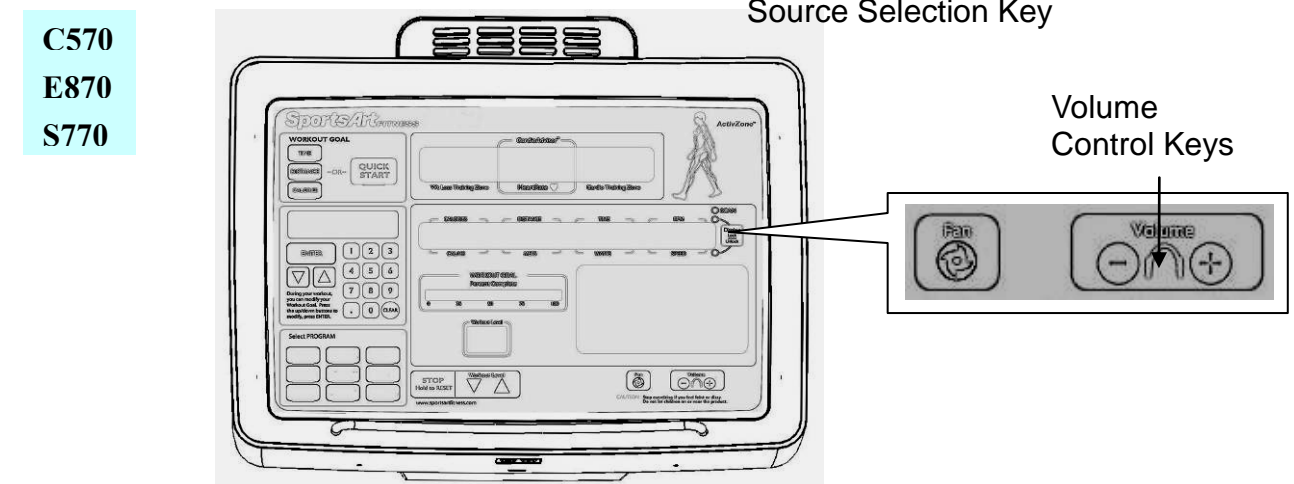
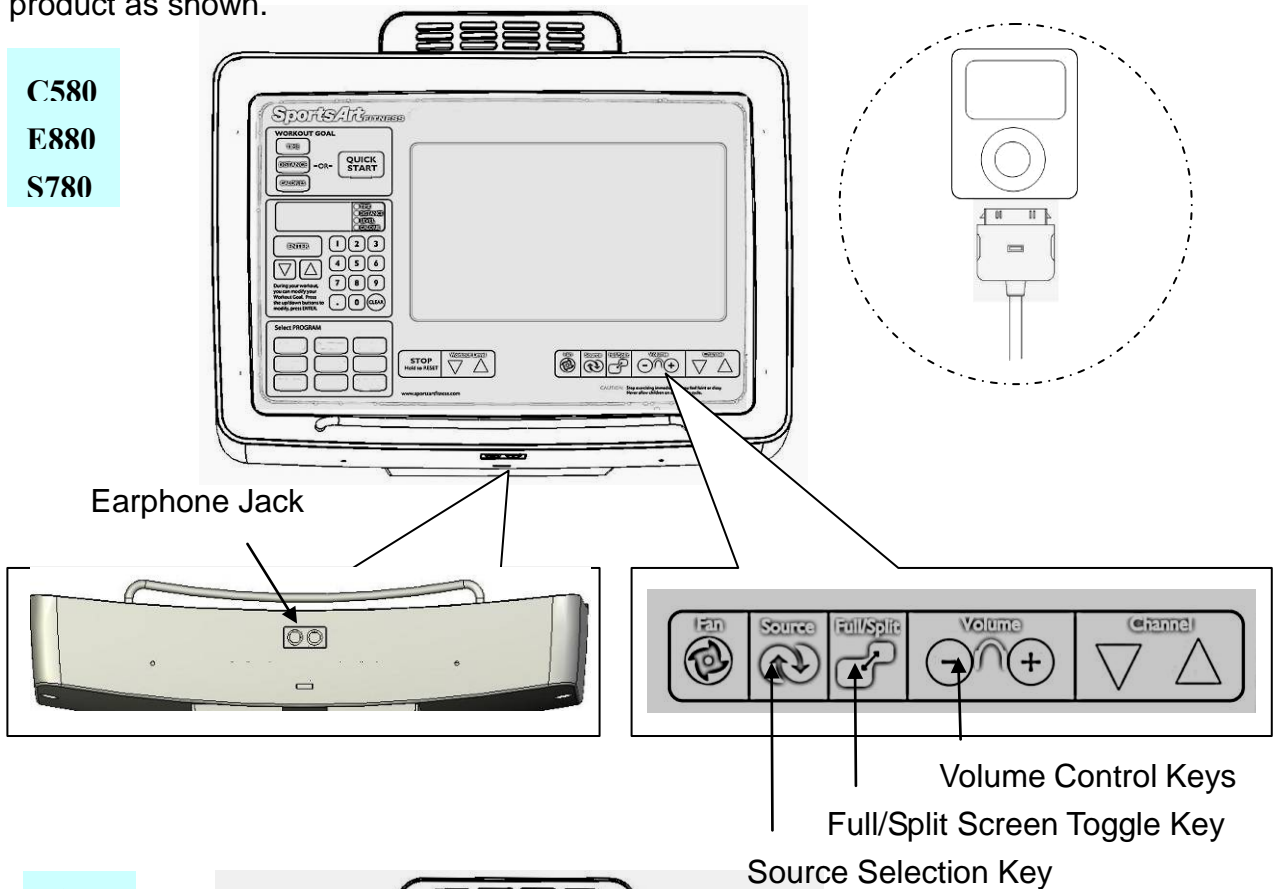
T670E: Press the play key on the iPod to select songs. Press the "Vol +/-" key on the treadmill to adjust music volume.

The iPod battery recharges when connected to the cardio product. Note: Third generation or newer iPod products have USB recharge capability.

Operating Instructions (Continued)

C580U/R, E880, S780, C570U/R, E870, S770

Please connect the iPod to the connector cable for iPod. Insert earphones into the earphone jack on the product as shown.



C580, E880, S780: Select “AV” mode by pressing the “Source” key on the treadmill until “AV” appears on the treadmill display. Press the play key on the iPod to view music and video titles. Press the “Full/Split” key on the treadmill to choose either full or split screen modes. Press “Volume +/-” keys on the treadmill to select volume.

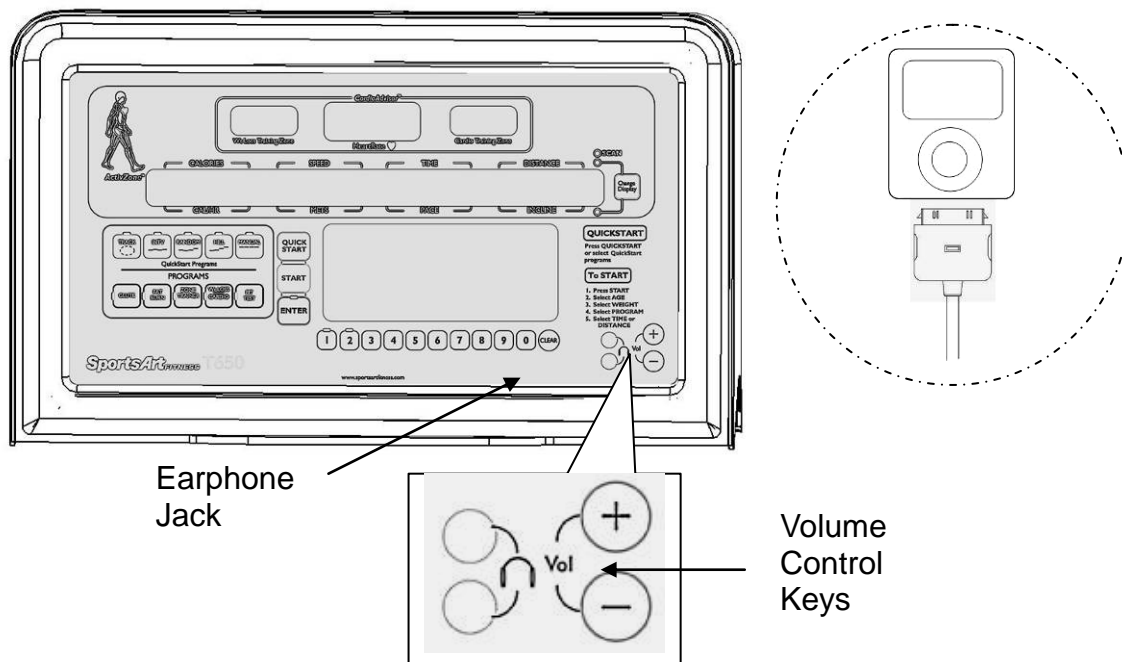
C570, E870, S770, T670E: Press the play key on the iPod to select songs. Press the “Vol +/-” key on the treadmill to adjust music volume.

The iPod battery recharges when connected to the cardio product. Note: Third generation or newer iPod products have USB recharge capability.

Operating Instructions (Continued)

T630

Please connect the iPod to the connector cable for iPod. Insert earphones into an earphone jack on the product as shown.



Press the play key on the iPod to select songs. Press the “Vol +/-” key on the treadmill to adjust music volume.

The iPod battery recharges when connected to the cardio product. Note: Third generation or newer iPod products have USB recharge capability.

Compatibility Chart

iPod product	SportsArt T630, T652, T670E, C570U, C570R, E870, S770 (no TFT screen)		SportsArt T680E, C580U, C580R, E880, S780 (TFT)	
	Audio	Video	Audio	Video
iPod with video	YES	Video appears only on iPod screen.	YES	YES (Video shows on built-in TV screen.)
iPod nano (5 th generation)	YES	Video appears only on iPod screen.	YES	YES (Video shows on built-in TV screen.)
iPod nano (4 th generation)	YES	Video appears only on iPod screen.	YES	YES (Video shows on built-in TV screen.)
iPod Touch 1st	YES	Video appears only on iPod screen.	YES	YES (Video shows on built-in TV screen.)
iPod Touch 2nd	YES	Video appears only on iPod screen.	YES	YES (Video shows on built-in TV screen.)
iPod Classic	YES	Video appears only on iPod screen.	YES	YES (Video shows on built-in TV screen.)
iPhone	YES	Video appears only on iPod screen.	YES	NO (There is audio but visual image appears choppy.)
iPhone 3G	YES	Video appears only on iPod screen.	YES	NO (There is audio but visual image appears choppy.)
iPhone 3GS	YES	Video appears only on iPod screen.	YES	NO (There is audio but visual image appears choppy.)

SportsArt Option Kit for iPod Limited Warranty

SportsArt warrants the option kit for iPod to be free from manufacturing defects for a period of 60 days after purchase: parts, no labor. The customer is responsible for proper installation.

SportsArt's obligation is limited to replacing parts or providing reimbursement, at the sole discretion of SportsArt Fitness. In the event of a malfunction, the purchaser is responsible for the return of the original option kit for iPod to SportsArt Fitness at his/her expense before replacement or reimbursement can be provided. THIS WARRANTY IS EXPRESSLY IN LIEU OF ALL OTHER WARRANTIES EXPRESSED OR IMPLIED, INCLUDING THE WARRANTIES OF MERCHANTABILITY AND/OR FITNESS FOR A PARTICULAR PURPOSE. Under no circumstances shall SportsArt Fitness be liable by virtue of this limited warranty or otherwise for damage to any person or property in excess of the purchase price of this optional device, or for any special, indirect, incidental, secondary or consequential losses, damages or expenses. Some states do not allow the exclusion or limitation of incidental or consequential damages, so the above limitation or exclusion may not apply to you.